

---

Finisher W1(Ver18.02)

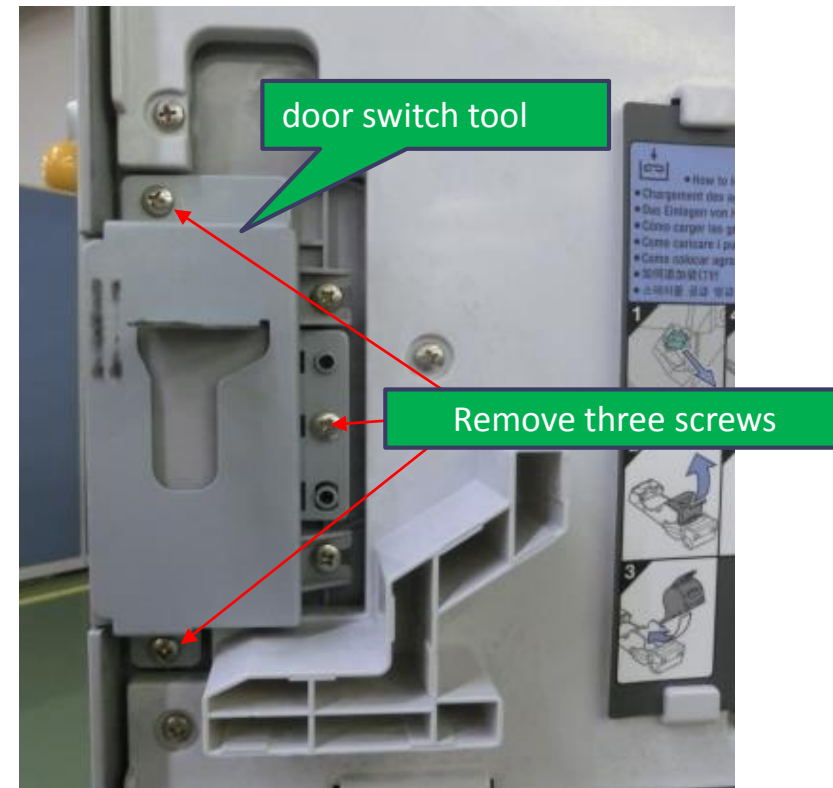
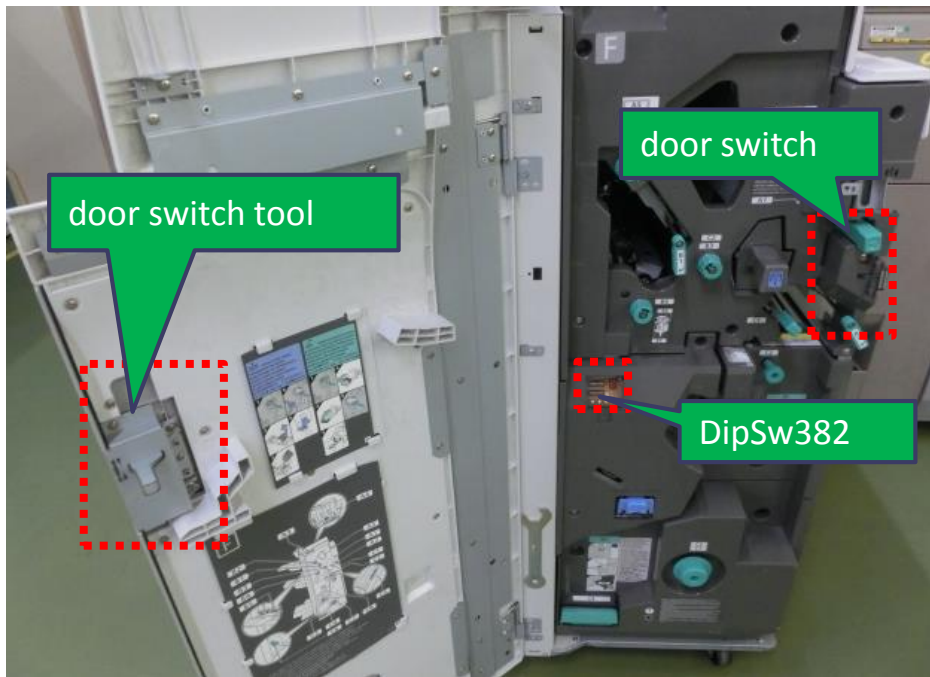
The DipSw setting process for C2017.0324.049.559 and  
C2017.1011.057.958.

CanonFinetechNisca 2018/3/16

## <preparations>

---

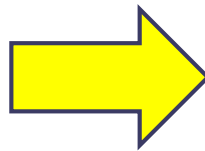
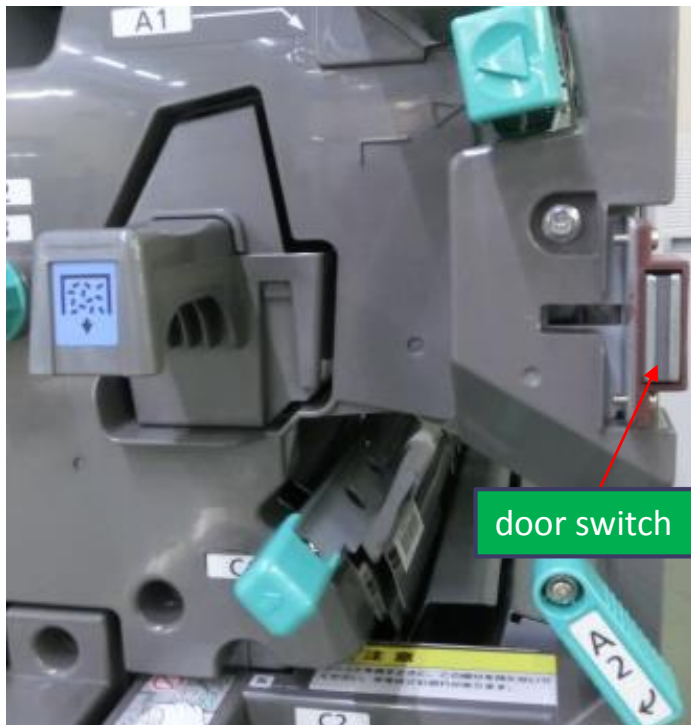
1. Turn ON the power of the finisher.
2. Turn ON the power of the host machine to be on standby.
3. Open the front cover and put the door switch tool.



## <preparations>

---

4. Insert the door switch tool into the door switch.

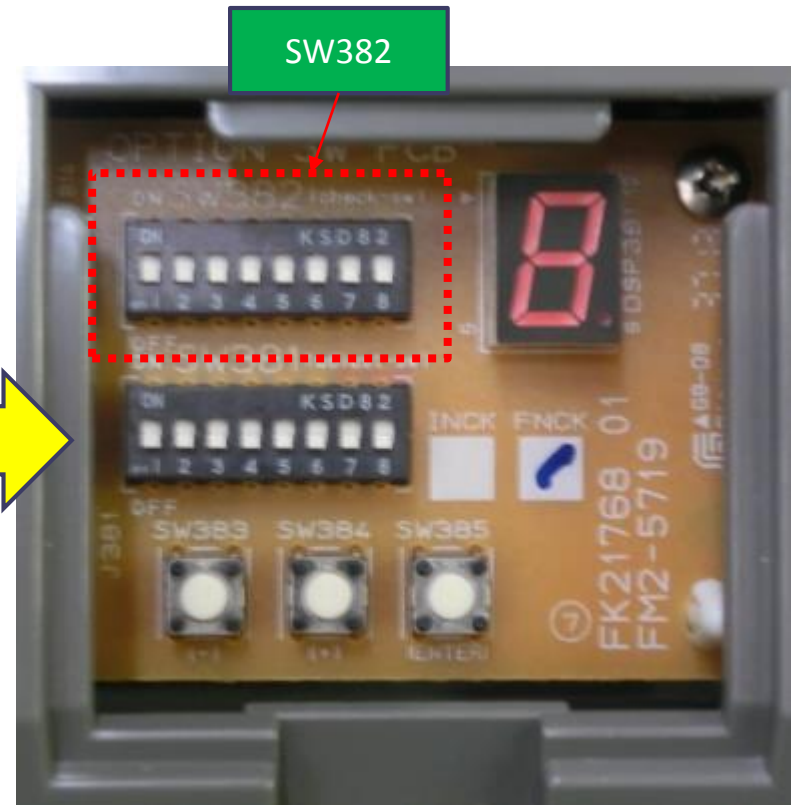
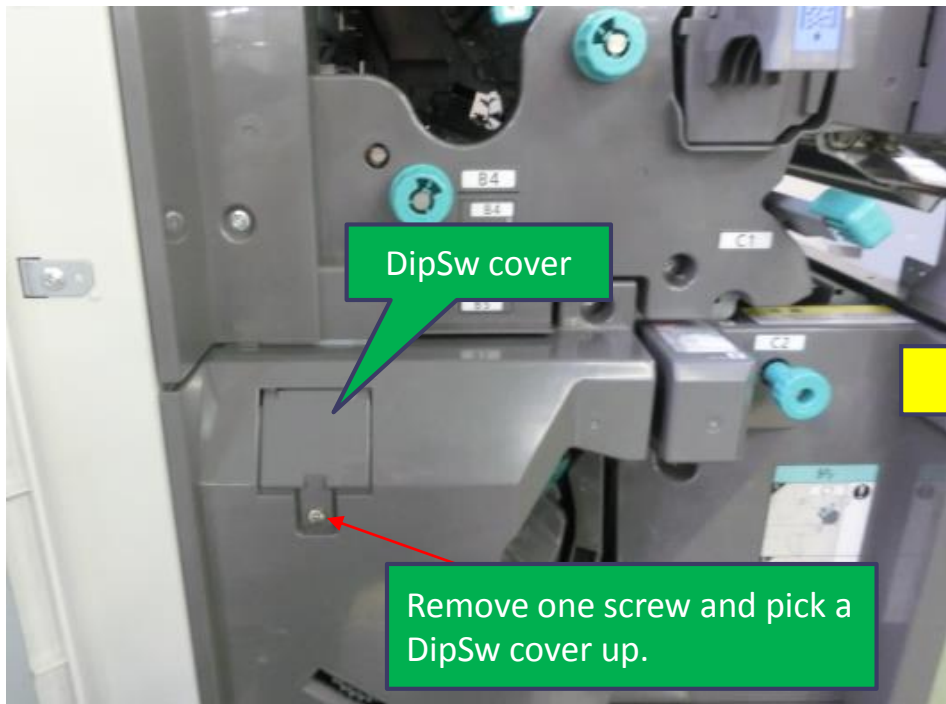


The door switch tool is for deceiving that a front cover is closed.

## <preparation>

---

5. Remove the DipSw cover.



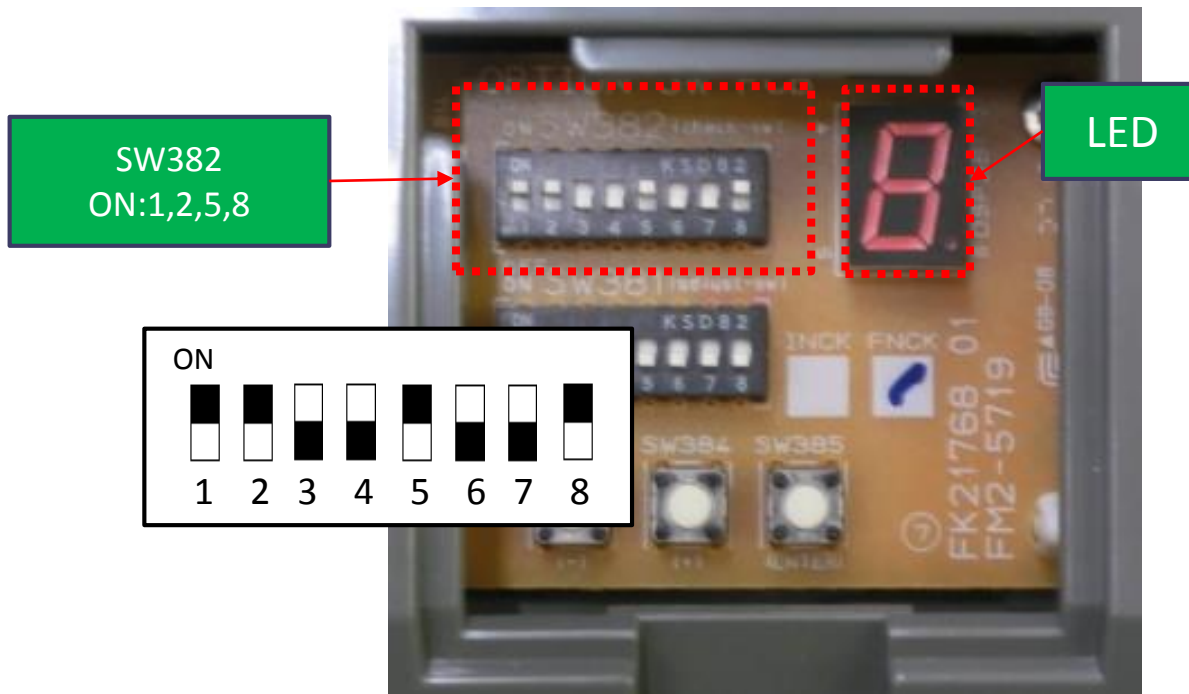
# <Procedure>

service mode	DipSw(SW382)								function
	1	2	3	4	5	6	7	8	
Change a paper exit speed									Change the speed after the processing eject slowdown to 500 → 450mm/s <i>*This setting has no effect, because the speed is already 450mm/s</i>
Alignment for the staple mode last paper									②Increase jogger evacuation distance for the last paper : 2mm→5mm ③Stop time before evacuating from the first alignment for staple last paper : 30msec→1030msec ④Time from alignment completion to a staple start for last paper : 40msec→140msec
Change a timing to turn a paddle									(before) ) I turn a paddle 140msec later after the rear end of the paper passed processing eject roller. (after) I turn a paddle 74msec later after the rear end of the paper passed processing eject roller.(only small size)

## <Change a paper exit speed>

---

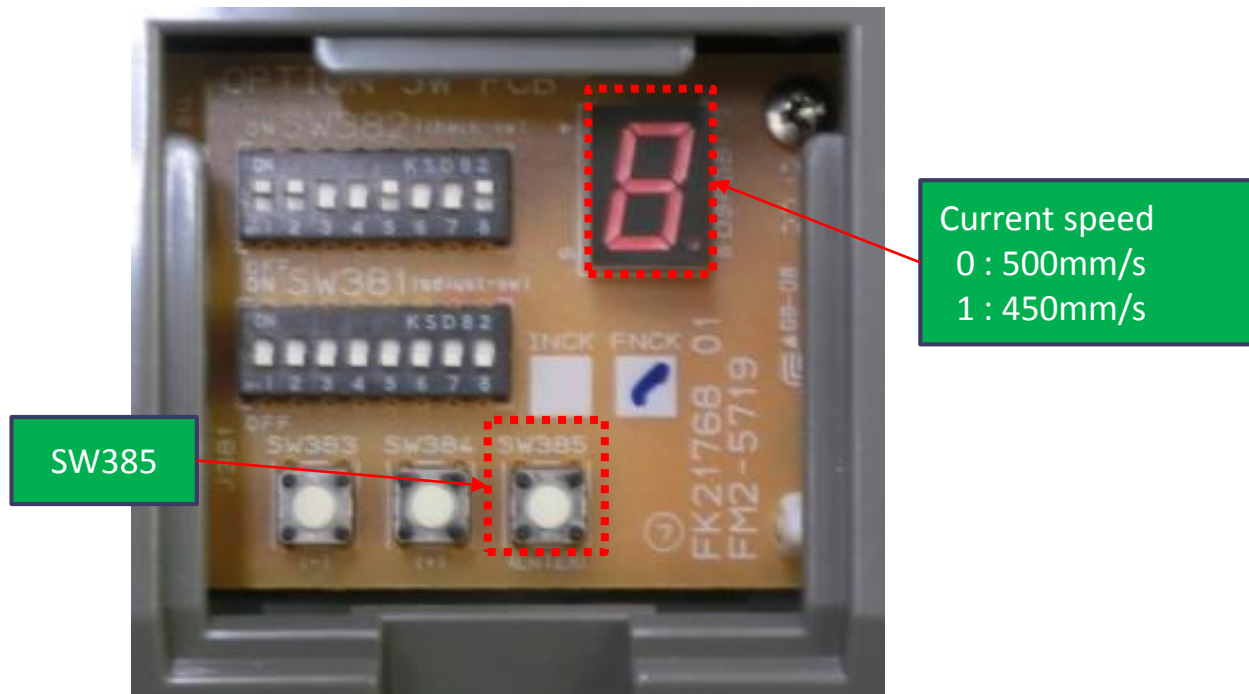
1. Set DIP SW382 on the switch PCB as shown in the figure and pic.
2. Then, The LED begins lighting.



## <Change a paper exit speed>

---

3. Press switch SW385 to check the current speed.

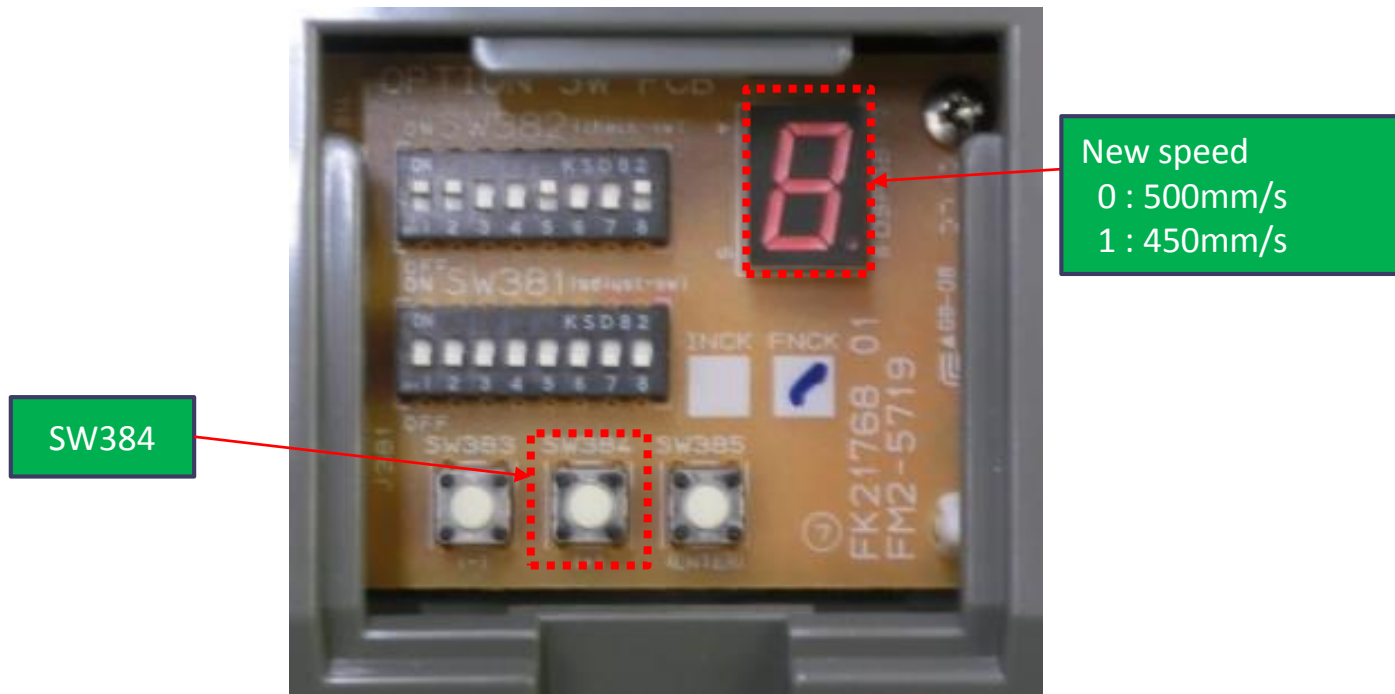




<Change a paper exit speed>

---

4. Press switch SW384 to select the new speed.



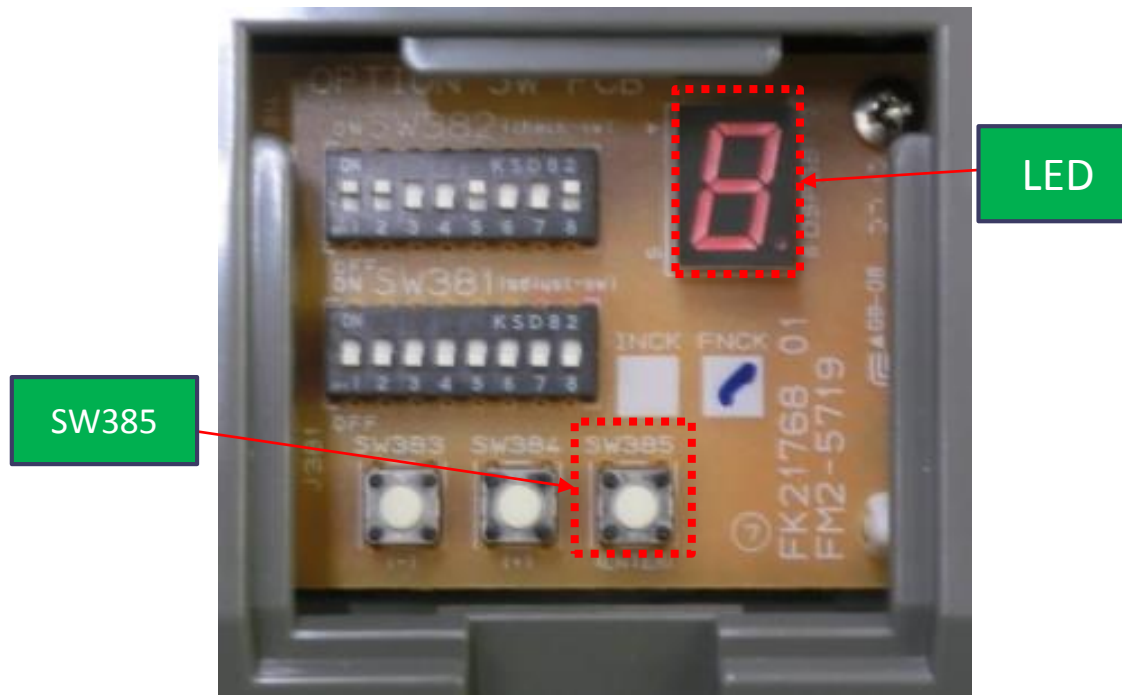


## <Change a paper exit speed>

---

5. Press switch SW385 to decide the new speed.

6. Then, The LED begins lighting.

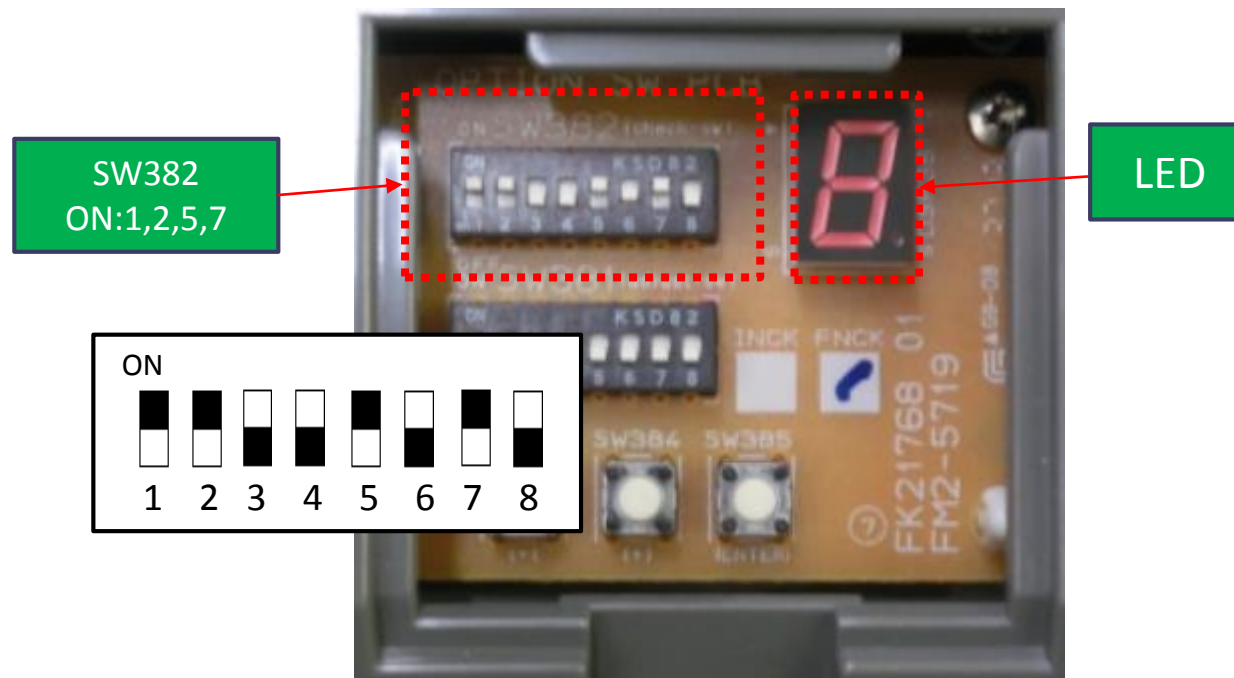


---

## <Alignment for the staple mode last paper>

---

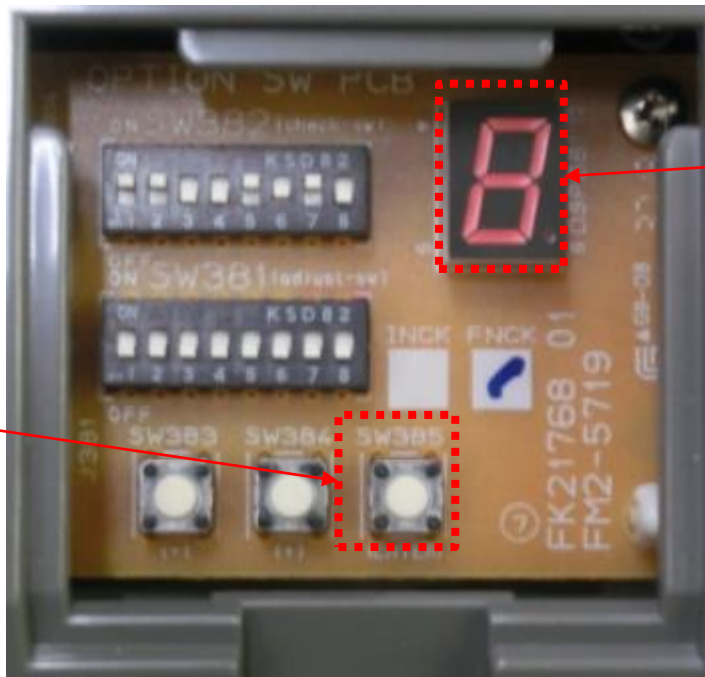
1. Set DIP SW382 on the switch PCB as shown in the figure and pic.
2. Then, The LED begins lighting.



## <Alignment for the staple mode last paper>

---

3. Press switch SW385 to check the current mode.



SW385

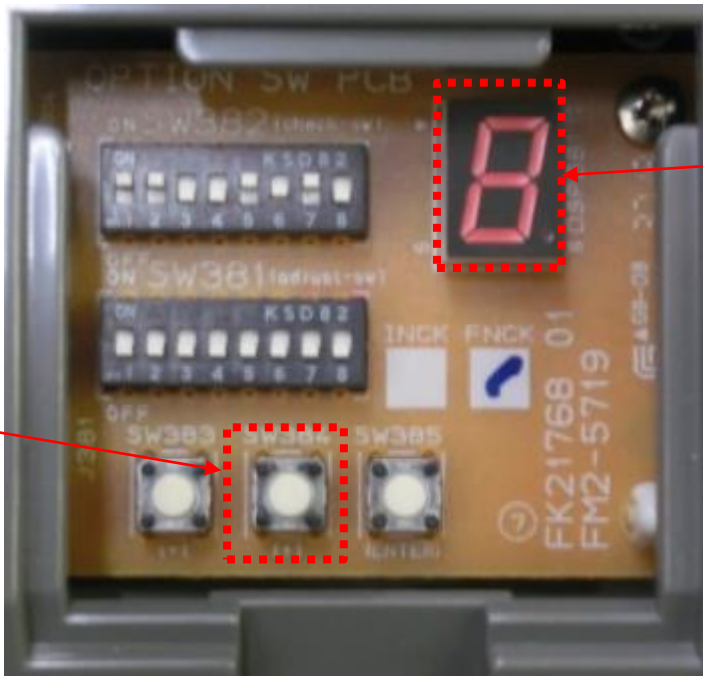
### Current mode

- 0 : ② Increase jogger evacuation distance for the last paper : 2mm
- ③ Stop time before evacuating from the first alignment for staple last paper : 30msec
- ④ Time from alignment completion to a staple start for last paper : 40msec
  
- 1 : ② Increase jogger evacuation distance for the last paper : 5mm
- ③ Stop time before evacuating from the first alignment for staple last paper : 1030msec
- ④ Time from alignment completion to a staple start for last paper : 140msec

## <Alignment for the staple mode last paper>

---

4. Press switch SW384 to select the new mode.



### New mode

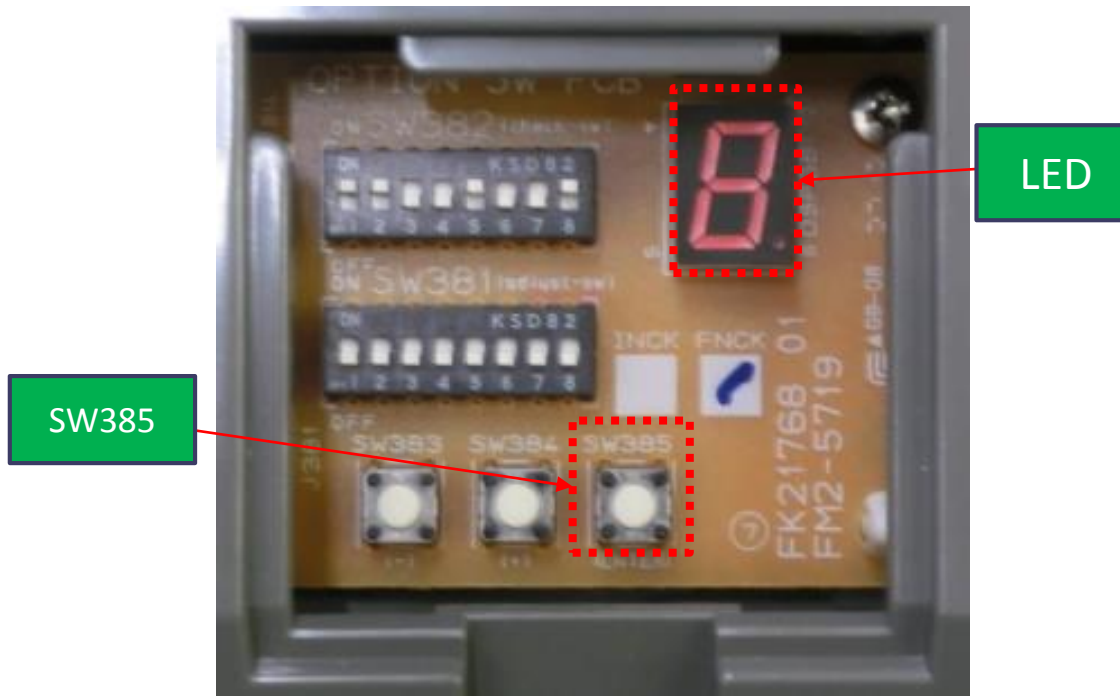
- 0 : ② Increase jogger evacuation distance for the last paper : 2mm
- ③ Stop time before evacuating from the first alignment for staple last paper : 30msec
- ④ Time from alignment completion to a staple start for last paper : 40msec
  
- 1 : ② Increase jogger evacuation distance for the last paper : 5mm
- ③ Stop time before evacuating from the first alignment for staple last paper : 1030msec
- ④ Time from alignment completion to a staple start for last paper : 140msec

<Alignment for the staple mode last paper>

---

5. Press switch SW385 to decide the new mode.

6. Then, The LED begins lighting.

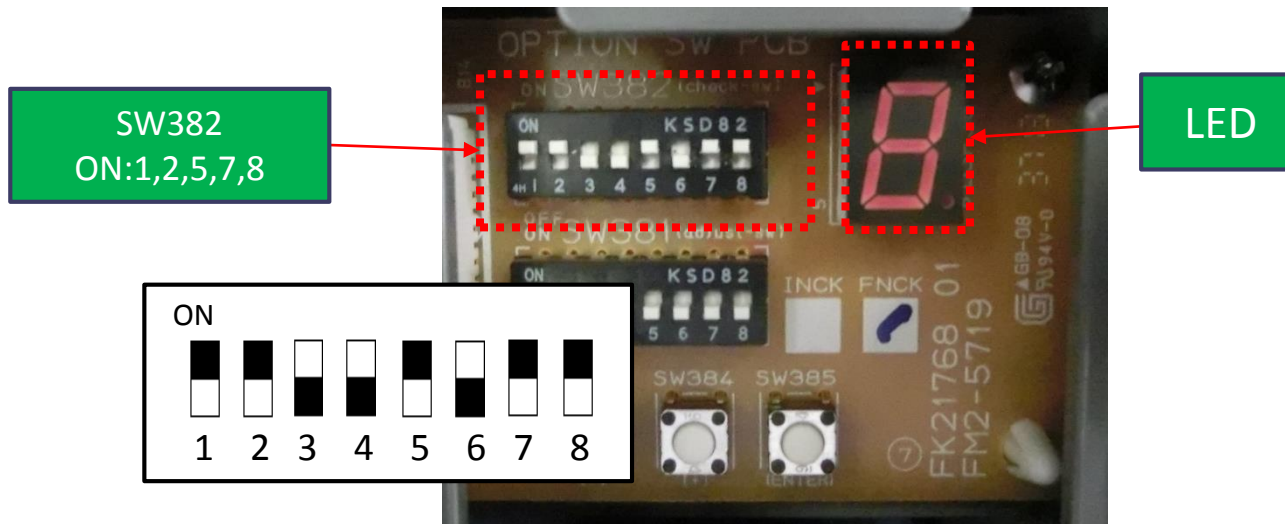






## <Change a timing to turn a paddle>

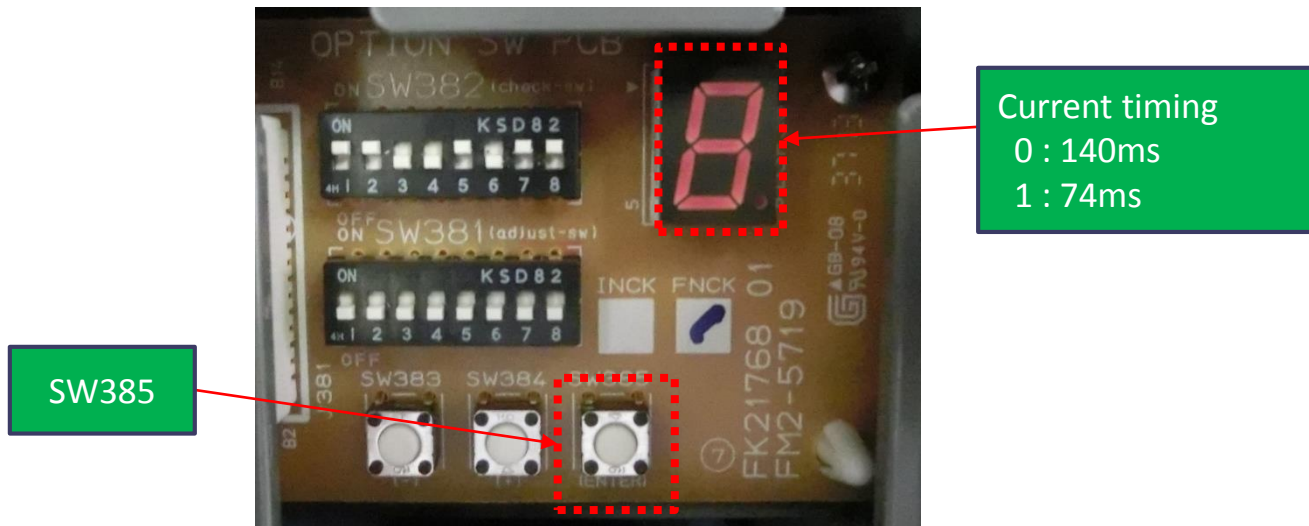
1. Set DIP SW382 on the switch PCB as shown in the figure and pic.
2. Then, The LED begins lighting.



<Change a timing to turn a paddle>

---

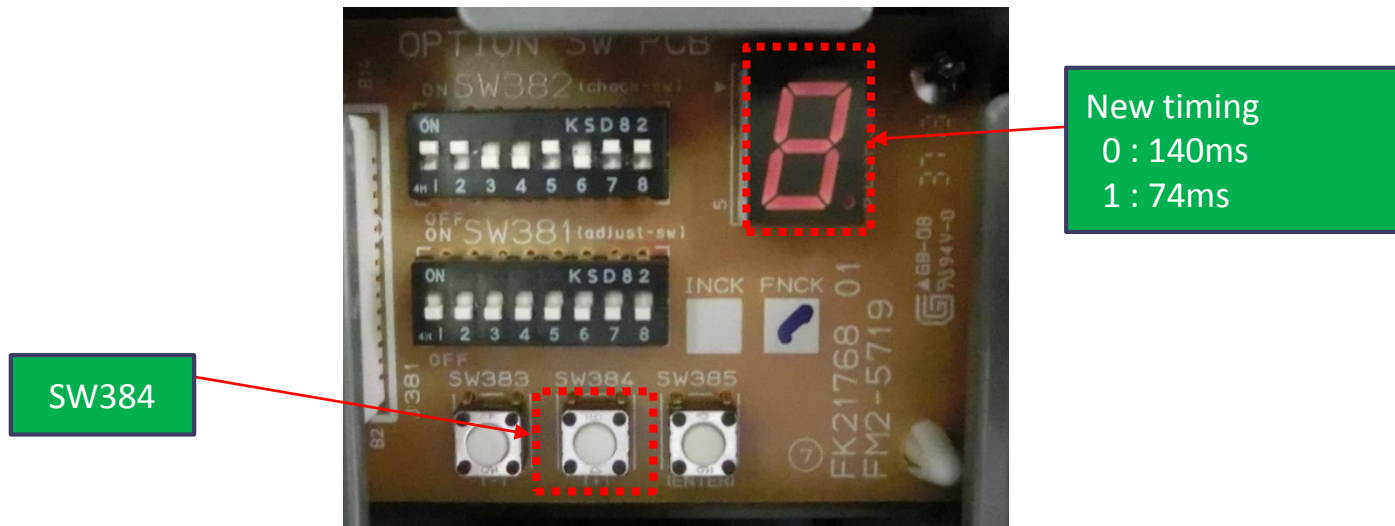
3. Press switch SW385 to check the current timing.



<Change a timing to turn a paddle>

---

4. Press switch SW384 to select the new timing.

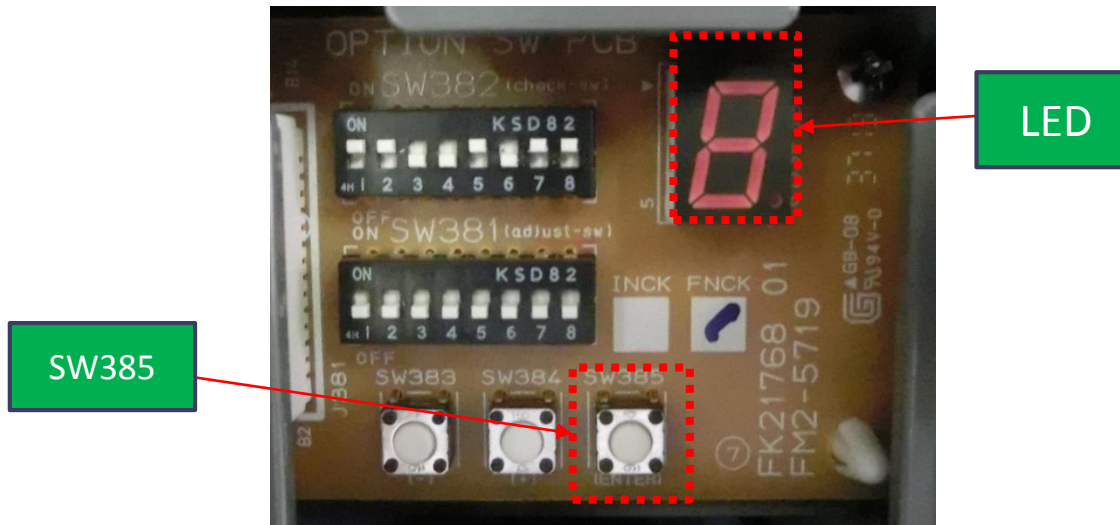


<Change a timing to turn a paddle>

---

5. Press switch SW385 to decide the new timing.

6. Then, The LED begins lighting.



<after procedure>

---

1. Set DipSw as Fig1.(All off)

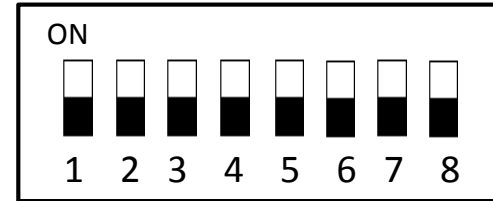


Fig1.

2. Recover the DipSw cover.

3. Remove the door switch tool and Replace it.

4. Close the front cover.